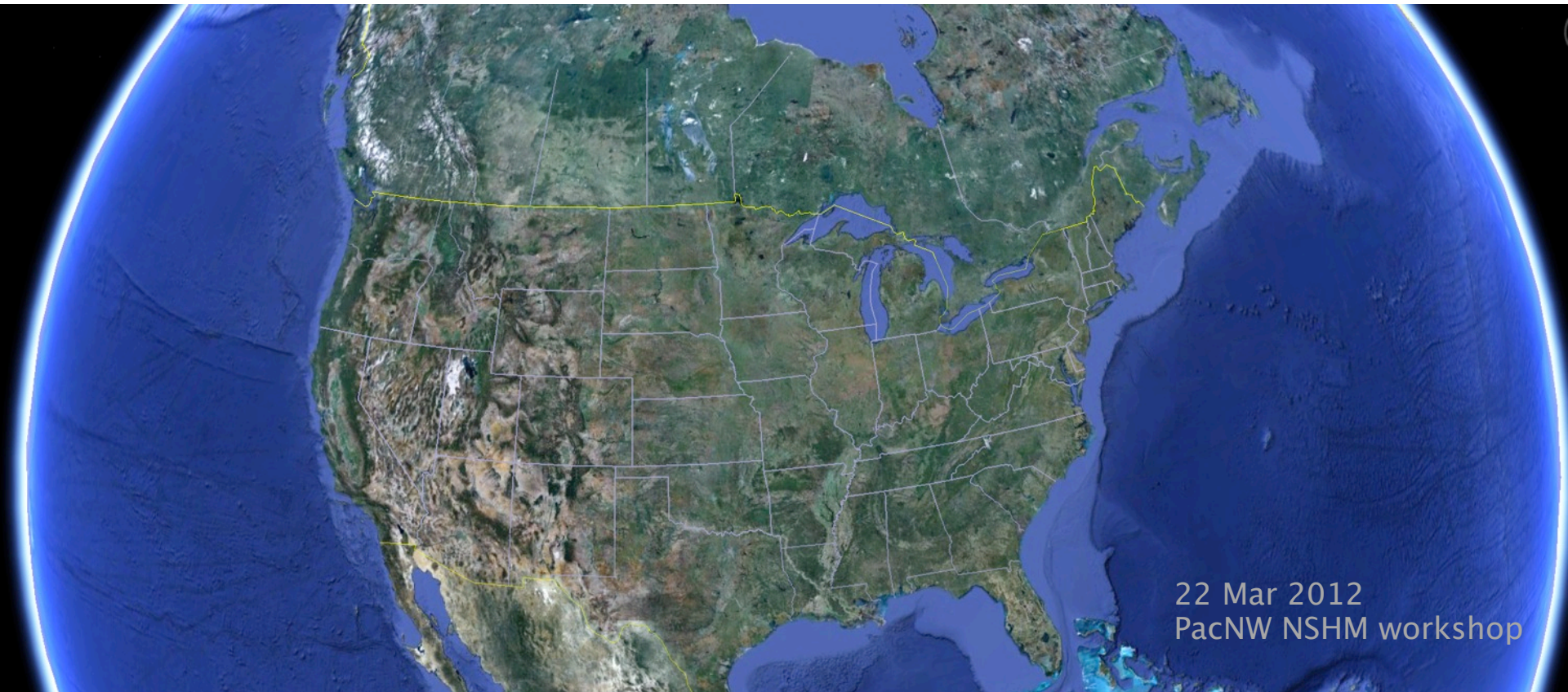


# USGS National Fault Datasets

Kathy Haller



22 Mar 2012  
PacNW NSHM workshop

# Quaternary faults vs. NSHM sources

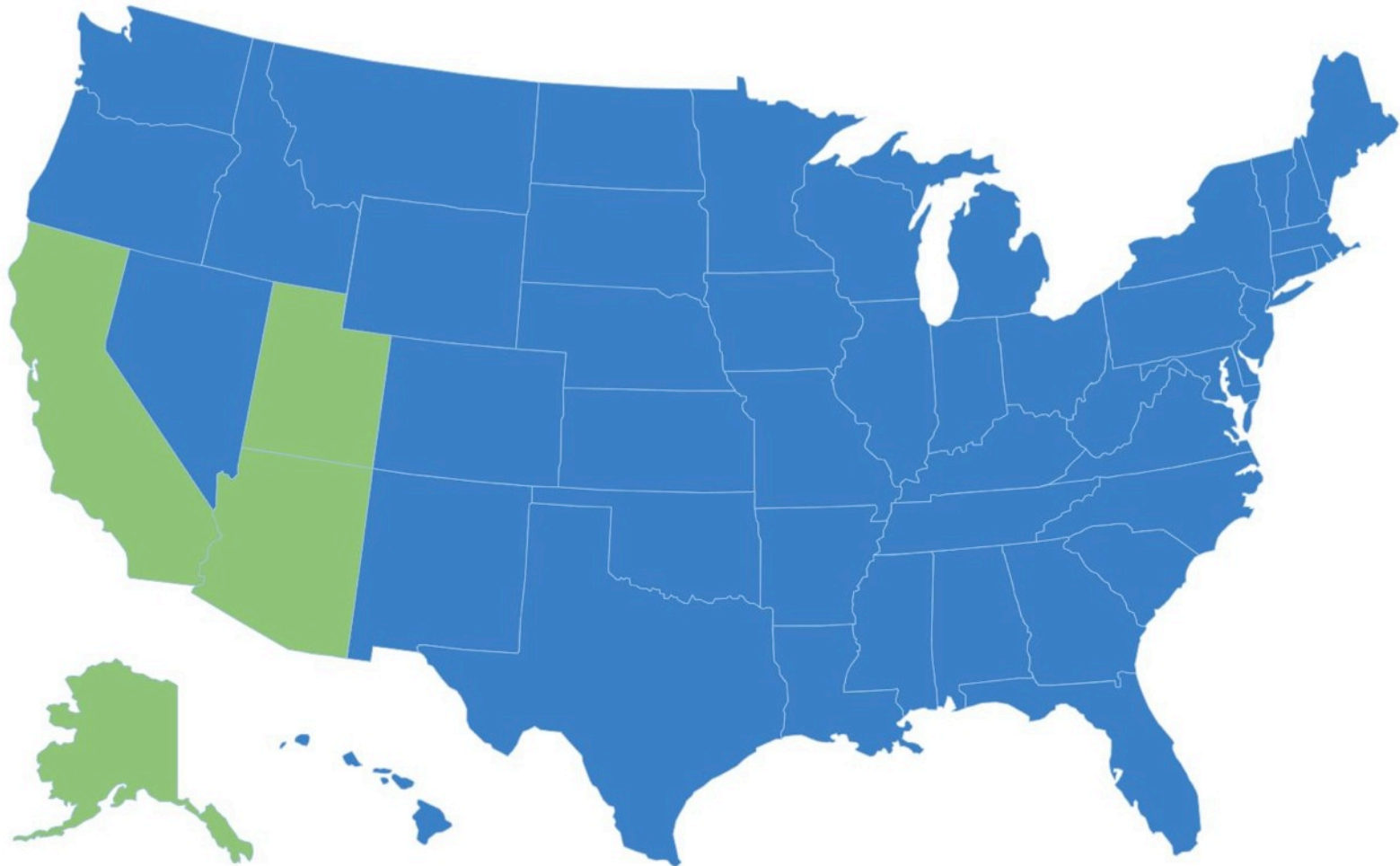
	Quaternary faults v.1	Quaternary faults v.2	NSHM sources
Release date	2001	2012–2013	1996    2008 2002    2014
Content	Compilation of pertinent geologic & paleoseismologic investigations	ditto	Geometric and behavioral parameters assigned to crustal fault sources for PSHA
Spatial accuracy	1:250,000 or 1:100,000	1:250,000 1:100,000 1:50,000 or 1:24,000	1:1,000,000

# Quaternary fault database



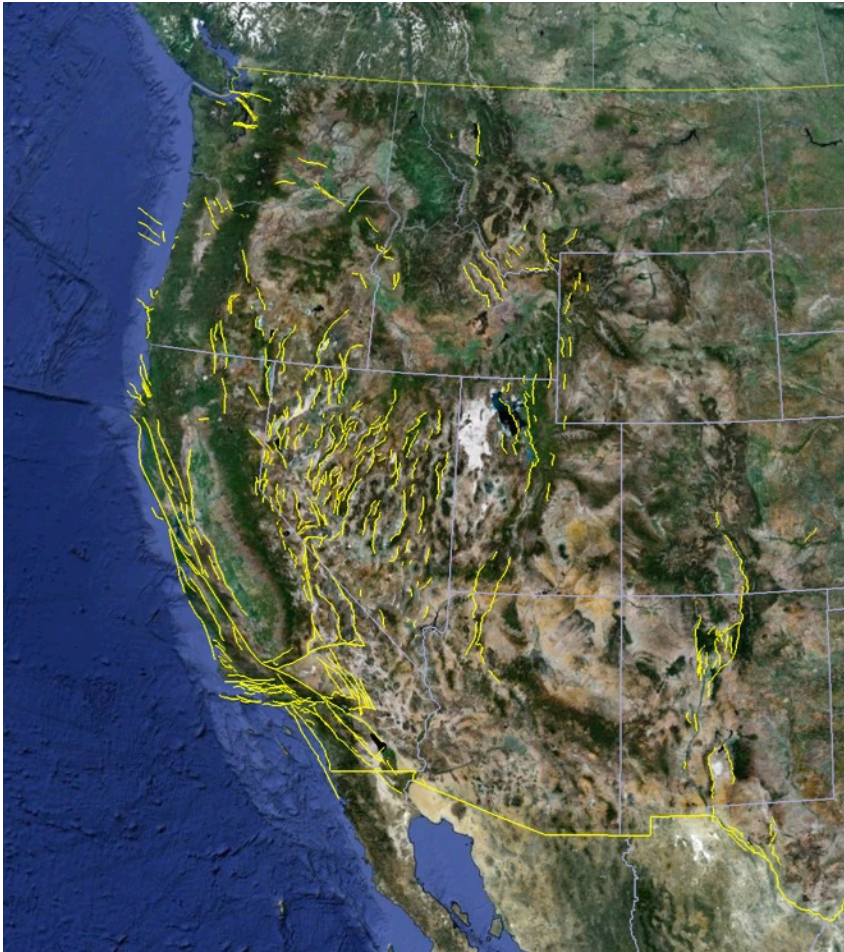
- > 2,000 faults with reported Quaternary surface deformation
- compilation of paleoseismologic and geologic investigation
- characterization of age of most recent movement, slip rate in broad bins
- location generalized corresponding to mapped scale
- Output Google Earth or GIS
- collaborations

# State-lead compilation





# NSHM source model



- about  $\frac{1}{4}$  of the known Quaternary faults are explicit sources
- nearly all of the post late Quaternary faults are represented
- published behavioral parameters including rate data required
- highly generalized source geometry from Quaternary dataset

# Questions?

