

WUS GMPEs Considered for 2014 Maps

Sanaz Rezaeian \ Mark Petersen

U.S Geological Survey, Golden, CO

USGS NSHMP Workshop on Ground Motion Prediction Equations for the 2014 Update

Thursday, December 13, 2012

I-House, Berkeley, CA

Western U.S. Ground Motion Models

2008 Maps

Weight

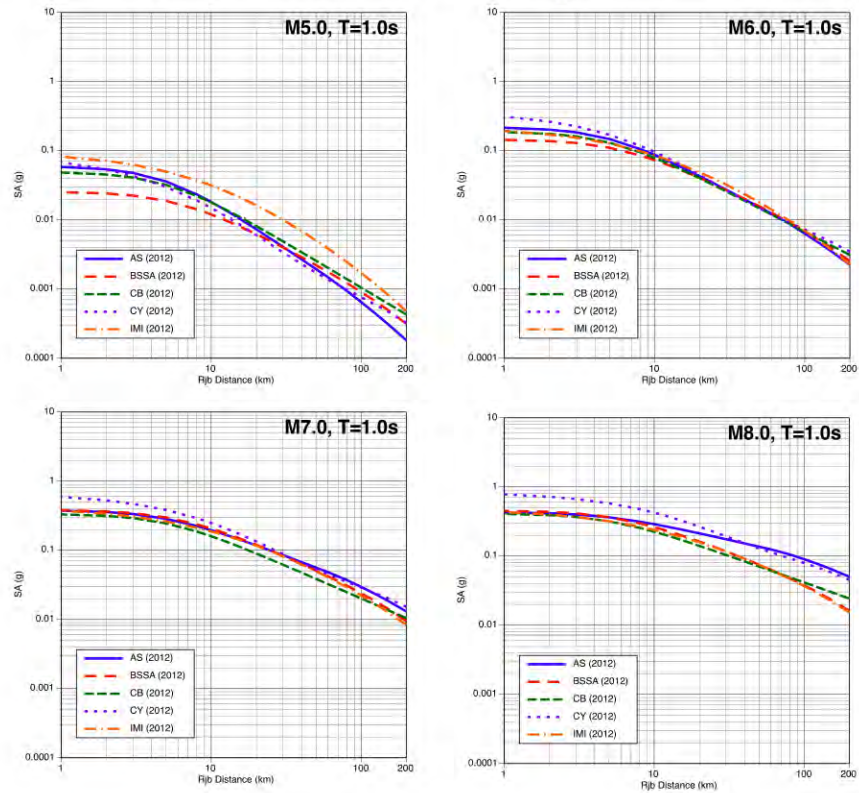
- | | | |
|----|--------------------------------------|-----|
| 1. | Boore and Atkinson (2008) -- NGA | 1/3 |
| 2. | Campbell and Bozorgnia (2008) -- NGA | 1/3 |
| 3. | Chiou and Youngs (2008) – NGA | 1/3 |

2014 Maps

1. Abrahamson and Silva (2012) – NGAW2
2. BSSA (2012) – NGAW2
3. Campbell and Bozorgnia (2012) – NGAW2
4. Chiou and Youngs (2012) – NGAW2
5. Idriss (2012) – NGAW2
6. Graizer and Kalkan (2009/2012)

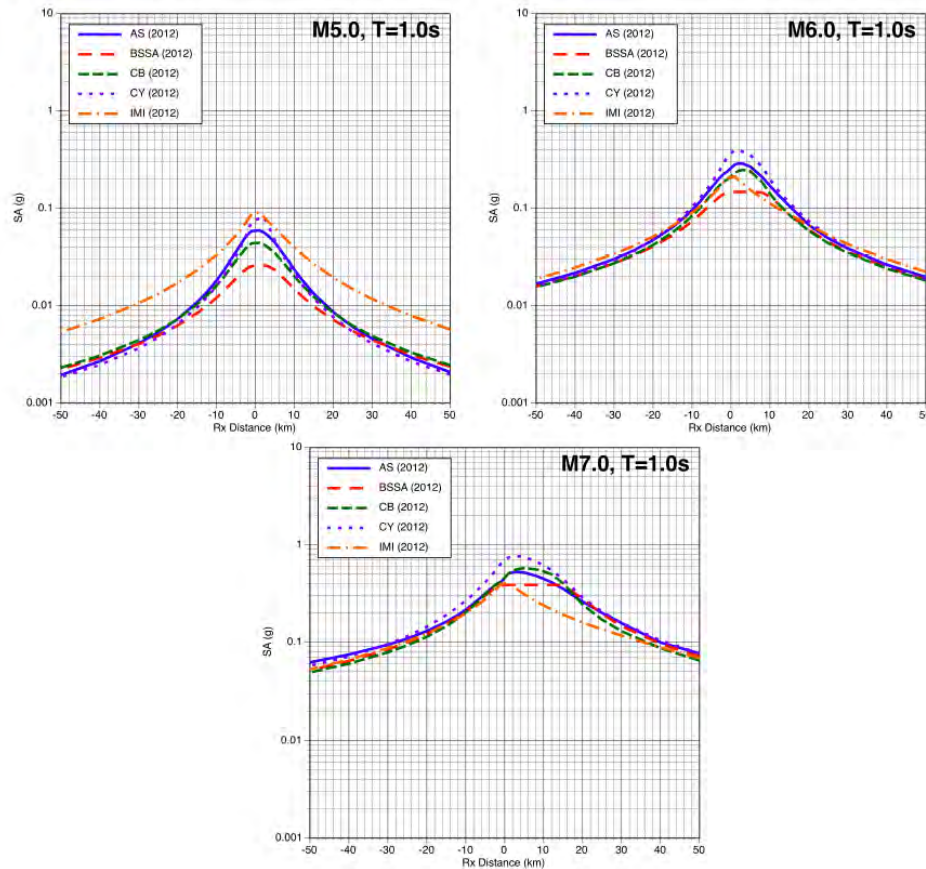
Western U.S. Ground Motion Models

Vertical Strike-Slip: $T=1.0\text{sec}$

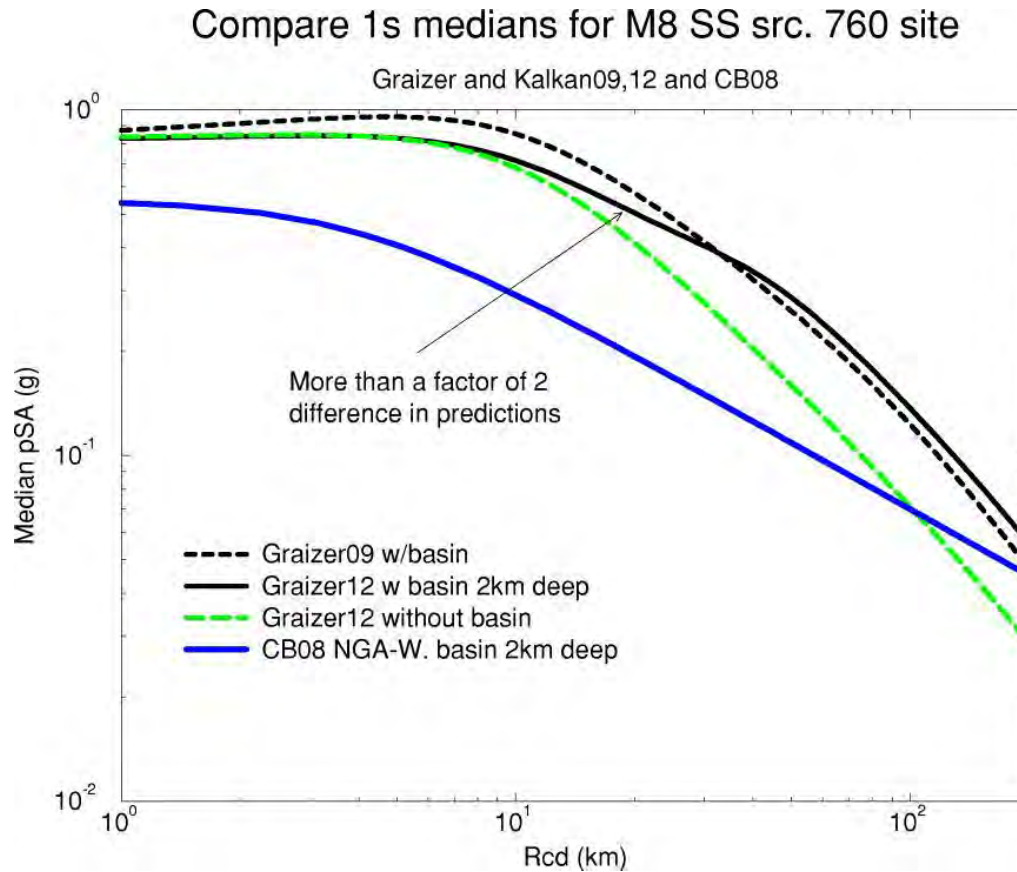


Western U.S. Ground Motion Models

Dipping Reverse Surface Fault: $T=1.0\text{sec}$



Western U.S. Ground Motion Models



Western U.S. Ground Motion Models

- Developer verification
- Tiger team in 2008