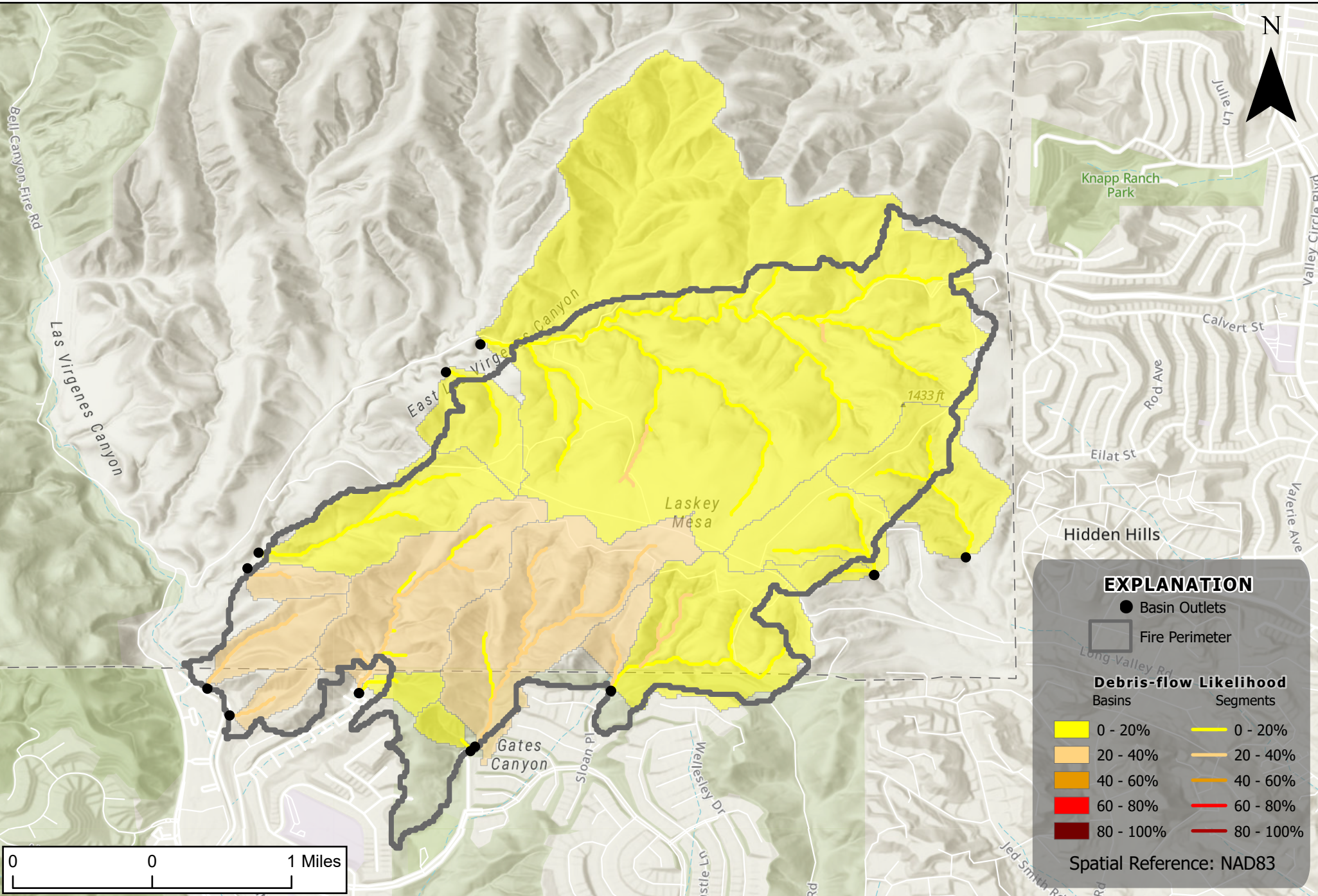


Kenneth Fire, Los Angeles and Ventura Counties, California

Debris-flow Likelihood

Design storm: Peak 15-minute rainfall intensity at 28mm/hour



EXPLANATION

● Basin Outlets

▭ Fire Perimeter

Debris-flow Likelihood

Basins

0 - 20%

20 - 40%

40 - 60%

60 - 80%

80 - 100%

Segments

0 - 20%

20 - 40%

40 - 60%

60 - 80%

80 - 100%

Spatial Reference: NAD83