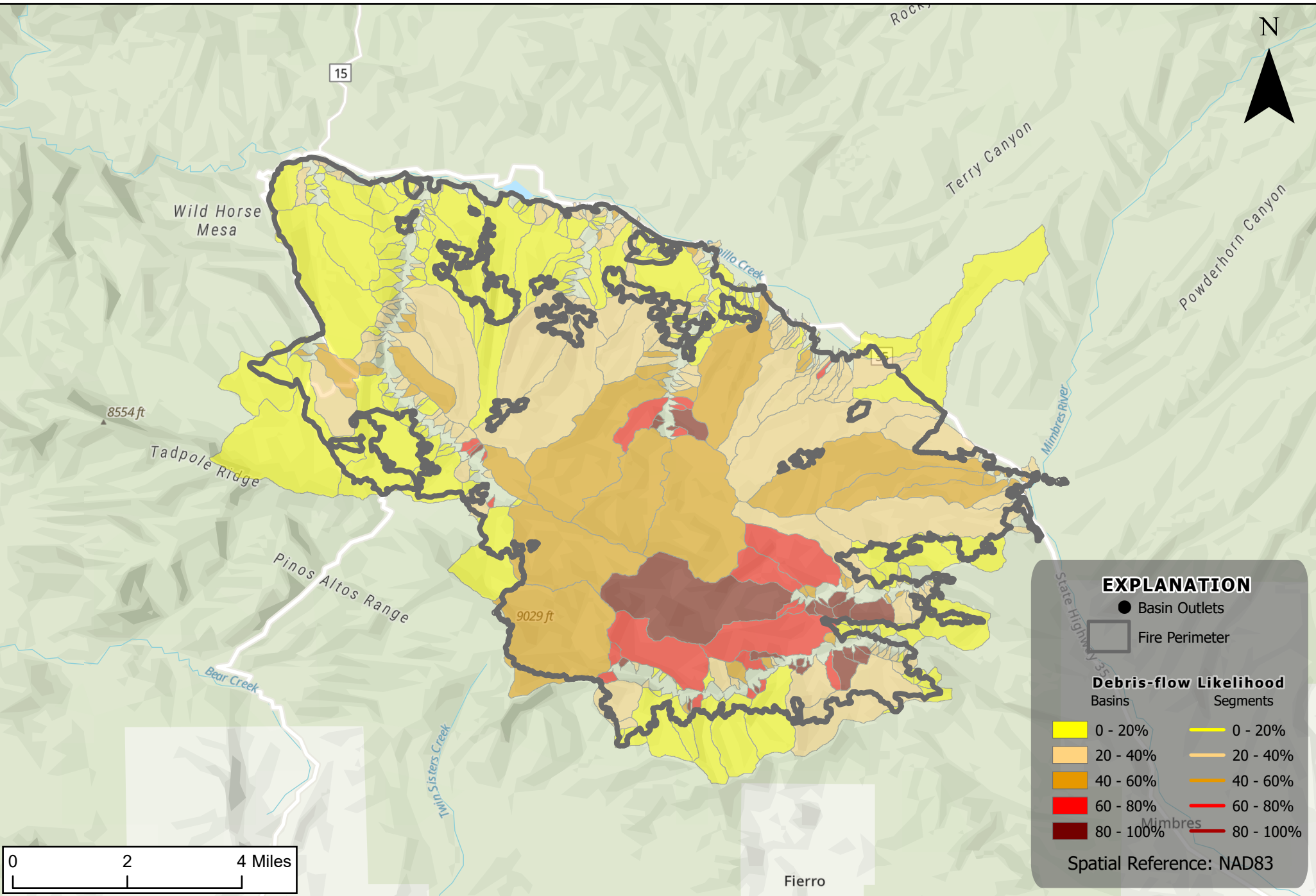


# Trout Fire, Gila National Forest

Debris-flow Likelihood

Design storm: Peak 15-minute rainfall intensity at 46mm/hour



## EXPLANATION

● Basin Outlets

□ Fire Perimeter

### Debris-flow Likelihood

Basins

0 - 20%

20 - 40%

40 - 60%

60 - 80%

80 - 100%

Segments

0 - 20%

20 - 40%

40 - 60%

60 - 80%

80 - 100%

Spatial Reference: NAD83