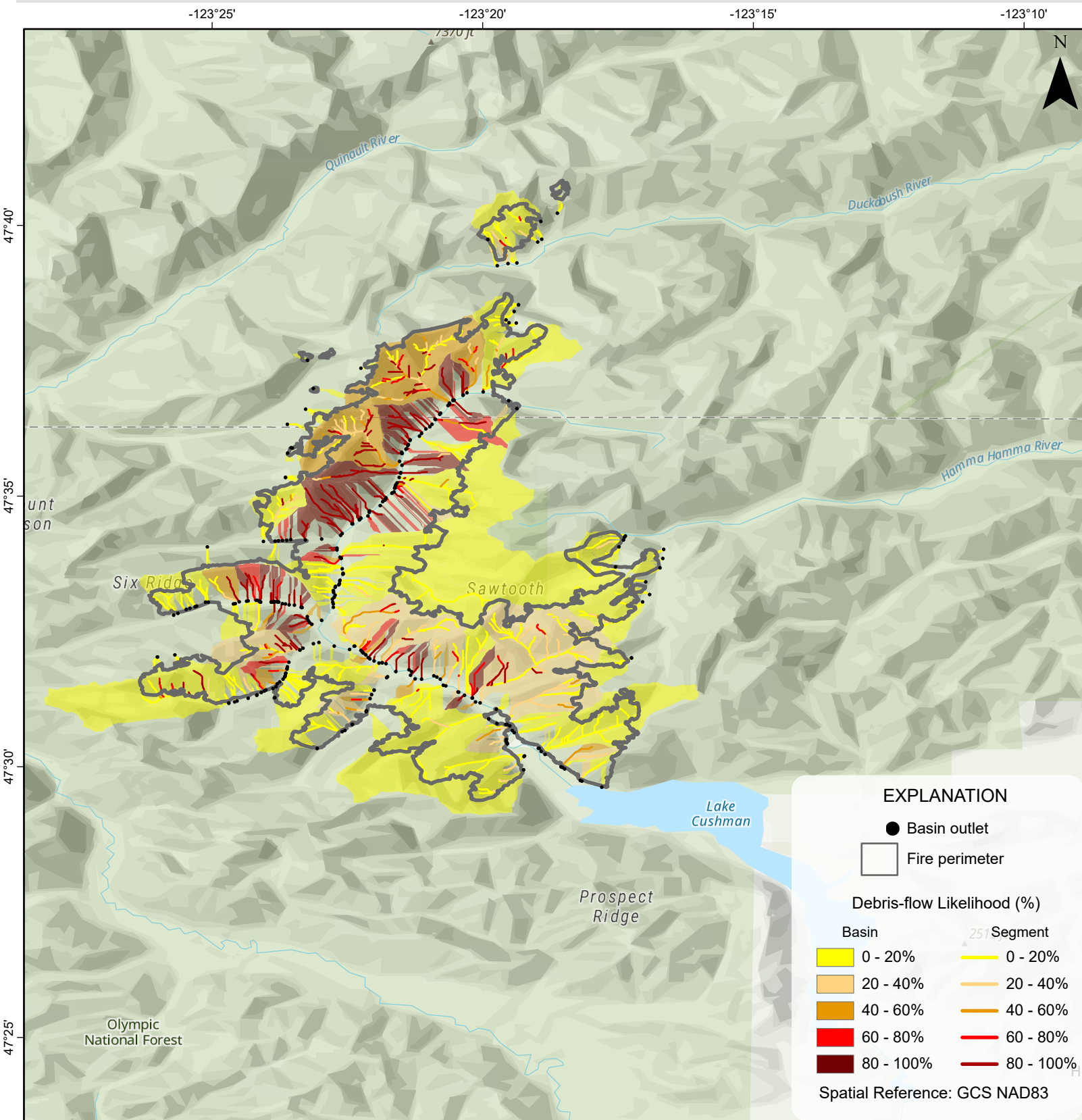


# Bear Gulch Fire, Olympic National Park

## Debris-flow Likelihood

Design storm: Peak 15-minute rainfall intensity at 24mm/hour



Basemap Sources: Esri, TomTom, Garmin, FAO, NOAA, USGS, © OpenStreetMap contributors, and the GIS User Community



Suggested Citation:

King, J.M., Kostelnik, J., Kean, J.W., Barnhart, K.R., Graber, A.P., Rengers, F.K., and Thomas, M.A., 2025, Post-Wildfire Debris-Flow Hazard Assessment (PWDFH) Collection: U.S. Geological Survey data release, <https://doi.org/10.5066/P14EWYME>

This work is preliminary and is subject to revision. It is being provided due to the need for timely "best science" information. The assessment is provided on the condition that neither the U.S. Geological Survey nor the United States Government may be held liable for any damages resulting from the authorized or unauthorized use of the assessment.